

## Planted insectaries at Lindendale NSW

To provide resources for beneficial insects and pollinators.  
Planted with a Network double disc seeder



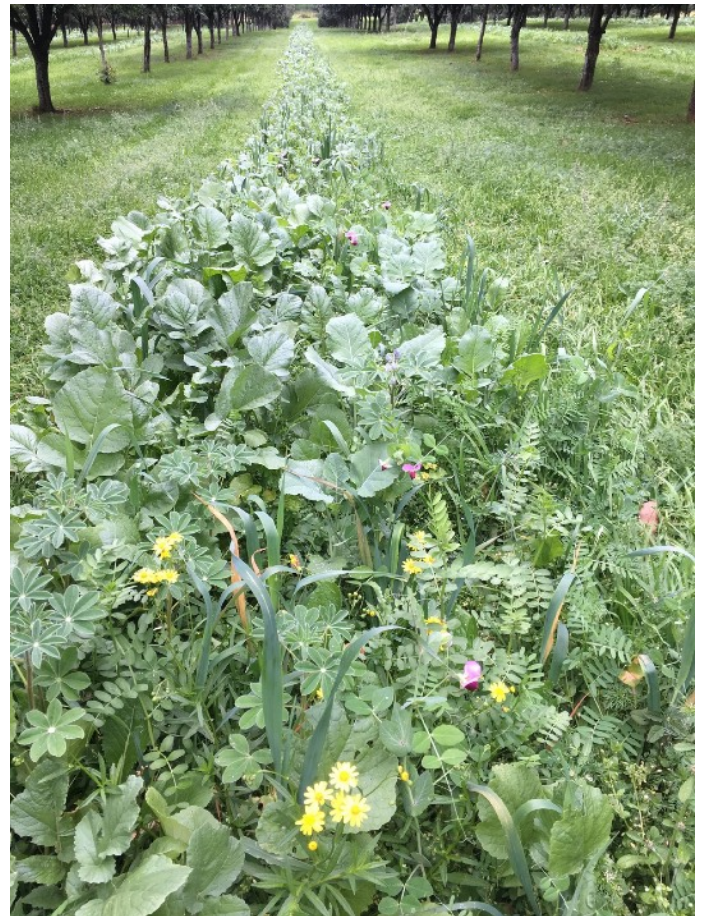
Just planted 14 May 2019



27 July 2019



23 Aug 2019



23 Aug 2019







Ladybird feeding on aphids on brassicas



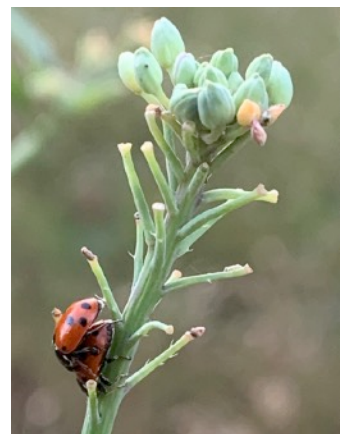
22 Sept 19  
Aphids provided food for predators like ladybirds, lacewing and hoverflies and honey dew for parasitoids



Ladybird eggs amongst the aphids



Predatory shield bug, a generalist predator feeding on a cabbage white butterfly larva



Ladybirds having a good time.

By 16 October the orchard was very dry. But still planting of "good bug" activity



## Various plantings early 2020



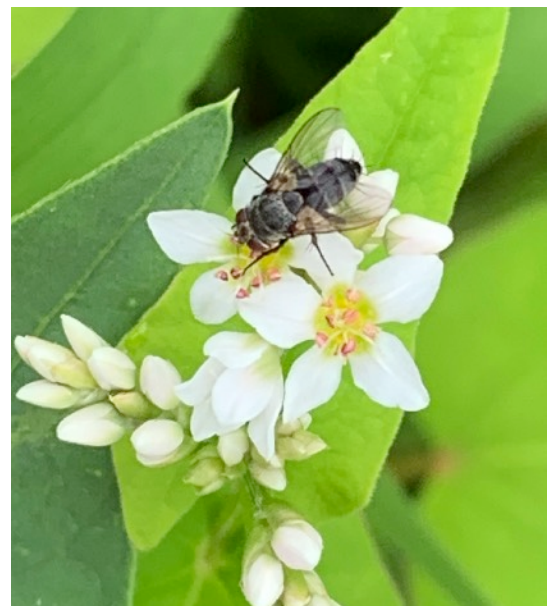
4 March 2020 dominated by buckwheat



Buckwheat and cow peas



A later planting as on 4 March 2020  
Buckwheat flowers within 6 weeks of planting so  
is quick to bring in flower loving species like  
hover flies.





**Winter Planting 9 May 2020**



Planting 9 May 2020



24 May 2020



11 June 2020





10 July 2020



10 July 2020





10 August 2020





3 Sept 2020

Trimming the flowers using the bucket to disperse  
the bees and beneficial insects...

